



STAR X-2, CANTINA-2, AND PORTOFINO TABLES

special 

Cast Iron 2.0
Breakroom & Café Tables

CAST IRON 2.0

TIMELESS ELEGANCE FIT FOR BREAKROOM OR CAFÉ

TIME-TRANSCENDING YET UP-TO-DATE,
CAST IRON TABLES ENCAPSULATE THE ECLECTIC AND THE ORNATE,
THE ANTIQUE AND THE WHIMSICAL



STAR X-2 AND CANTINA-2 TABLES



PORTOFINO-2 AND STAR X-2 TABLES

CAST IRON 2.0 BASE STYLES



CANTINA-2



STAR X-2



PORTOFINO-2

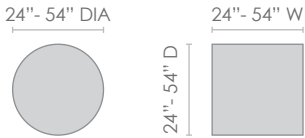
CLASSIC FUNCTIONALITY

Cast Iron 2.0 tables are manufactured of high-quality cast iron and finished with a black or gray powder coat. Feel inspired to transform any breakroom or cafeteria into a masterpiece of welcoming design by selecting from dozens for top finishes, edge treatments, and two metal finishes.

CAST IRON 2.0 BASE STYLES



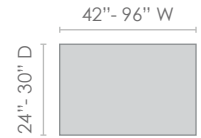
CANTINA-2



STAR X-2



PORTOFINO-2



COLORS

- TFL
- Any WilsonArt and Formica laminate
- Wood Veneer
- Black Wrinkle or Fog Gray finish



Fog Gray



Black Wrinkle

HEIGHTS

29" Dining Height
42" Bar Height

POWER & DATA

- USB
- Wireless
- Power
- Wire Management

EDGES

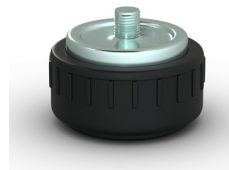
- TFL tops with matching color 3mm vinyl edge
- HPL tops with matching or contrasting vinyl, wood, or Urethane edge
- Wood veneer features 8 wood edge options stained to match

OTHER OPTIONS



FOOT RING

A foot ring allows your customers to rest their feet for a more comfortable dining experience.



SELF-LEVELING GLIDES

An automatic self-adjusting glide that permanently eliminates table wobble by instantly and self-adjusting to an uneven floor.



TABLES, BASES & ACCESSORIES

888.705.0777

Configure and Price online at SpecialT.net/tables/cast_iron



OPTIONS+ 1 DAY QS 5 DAY QS

Building Tables | Building Community | ReBuilding Lives