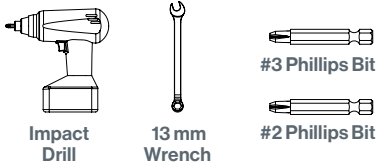
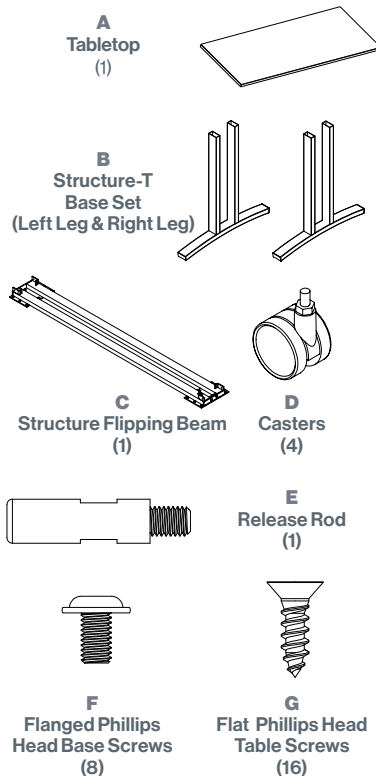


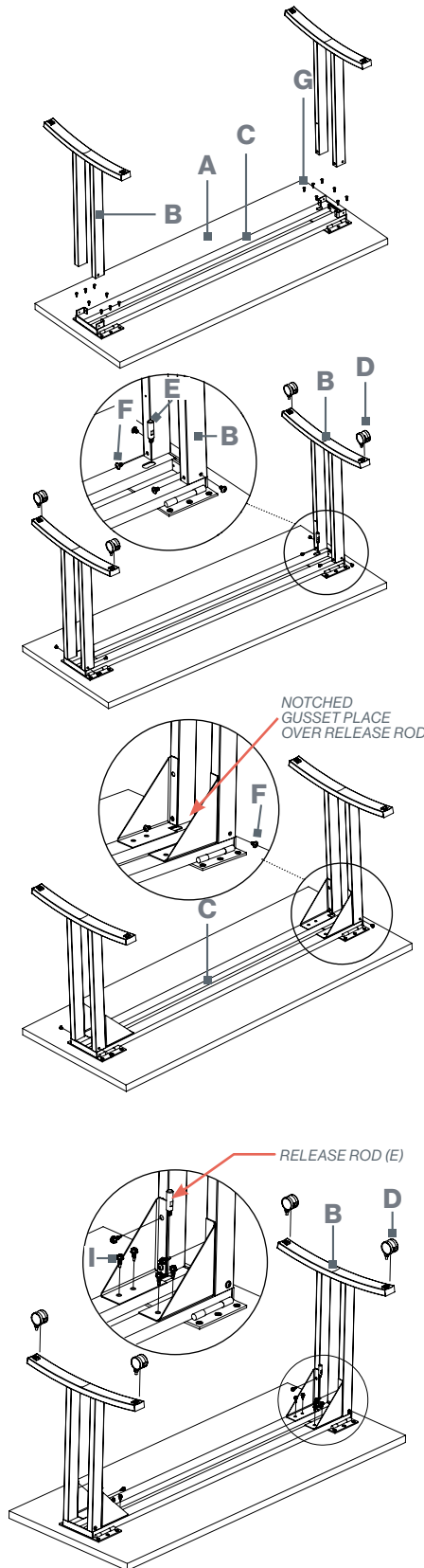
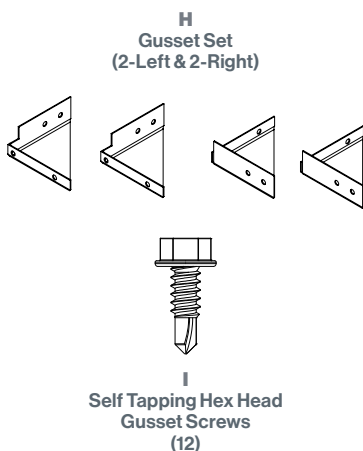
TOOLS



PARTS & HARDWARE LIST



OPTIONAL



ASSEMBLY STEPS

1. Position the Structure Flipping Beam **(C)** on the bottom of the tabletop **(A)**, aligning pre-drilled holes if applicable.
2. Mount Structure Flipping Beam **(C)** to the table using (16) Flat Head Table Screws **(G)**.
3. Position the Left & Right Structure Bases **(B)** onto vertical tabs on the Flipping Beam **(C)** (Ensure that holes in the Structure Bases are facing inward).

ASSEMBLY WITHOUT GUSSETS

4. Install (8) Flanged Phillip Head Base Screws **(F)** through Left & Right Base **(B)** into Flipping Beam **(C)**.
5. Remove the Release Rod **(E)** from the hardware pack and install it on the Flipping Beam **(C)**.
6. Install (4) Casters **(D)** onto the Base **(B)** using a 13mm wrench.

ASSEMBLY WITH OPTIONAL GUSSETS

7. Install (4) Flanged Phillip Head Base Screws **(F)** through the Left & Right Base **(B)** outer holes into the Flipping Beam **(C)**.
8. Position Left & Right Gussets **(H)** onto the flipping beam **(B)** (Notched Gusset placed over the Release Rod).
9. Install (4) Flanged Phillip Head Base Screws **(F)** through Gussets **(H)** into Left & Right Base inner holes.
10. Install (12) Self Tapping Hex Head Gusset Screws **(I)** through Gussets **(H)** into Base **(B)** & Flipping Beam **(C)**.
11. Remove the Release Rod **(E)** from the hardware pack and install it on the Flipping Beam **(C)**.
12. Install (4) Casters **(D)** onto the Base **(B)** using a 13mm wrench.
13. Have two people hold onto the edges of the top to turn the table over to an upright position.

FOR MISSING PARTS OR QUESTIONS, PLEASE CALL CUSTOMER SERVICE AT 888-705-0777.