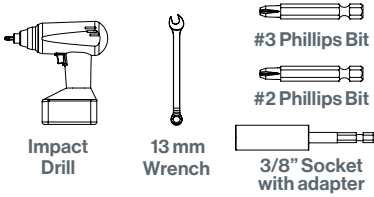
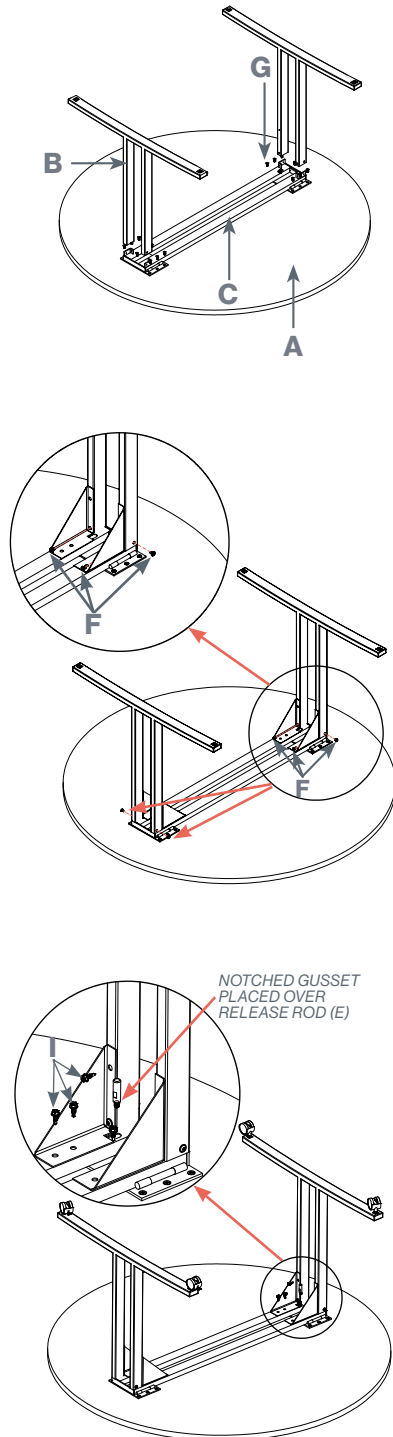
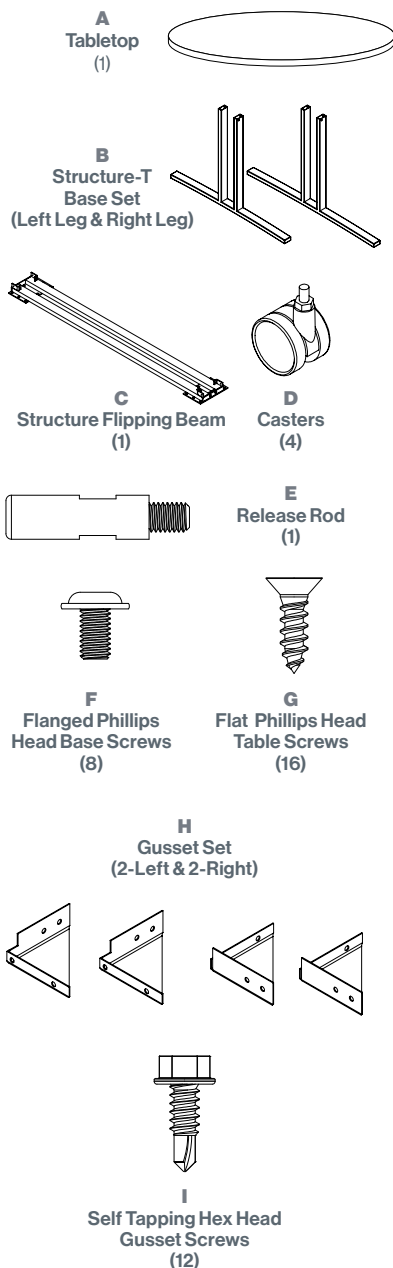


TOOLS



PARTS & HARDWARE LIST



ASSEMBLY STEPS

1. Position the Structure Flipping Beam **(C)** on the bottom of the tabletop **(A)**, aligning pre-drilled holes if applicable.

CRITICAL NOTE:
Ensure beam is oriented correctly.

2. Mount Structure Flipping Beam **(C)** to the table using (16) Flat Head Table Screws **(G)**.

3. Position the Left & Right Structure Bases **(B)** onto vertical tabs on the Flipping Beam **(C)** (Ensure that holes in the Structure Bases are facing inward).

4. Install (4) Flanged Phillips Head Base Screws **(F)** through Left & Right base outer holes into Flipping Beam **(C)**.

5. Position Left & Right Gussets **(H)** onto the flipping beam **(C)** (Notched Gusset placed over the Release Rod).

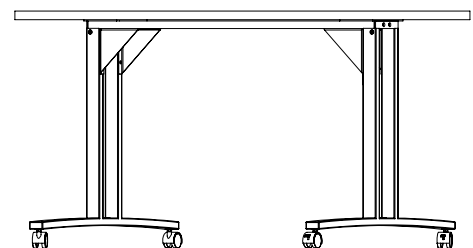
6. Install (4) Flanged Phillips Head Base Screws **(F)** through the Left & Right Base **(B)** inner holes into the Flipping Beam **(C)**.

7. Install (12) Self Tapping Hex Head Gusset Screws **(I)** through Gussets into the Base **(B)** and Flipping Beam **(C)**.

8. Remove the Release Rod **(E)** from the hardware pack and install it on the Flipping Beam **(C)**.

9. Install (4) Casters **(D)** onto the Base **(B)** using a 13mm wrench.

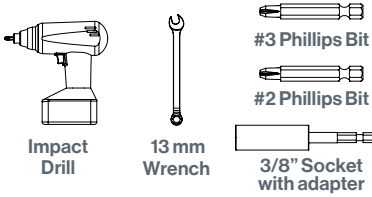
10. Have two people hold onto the edges of the top and carefully turn the table over into the upright position.



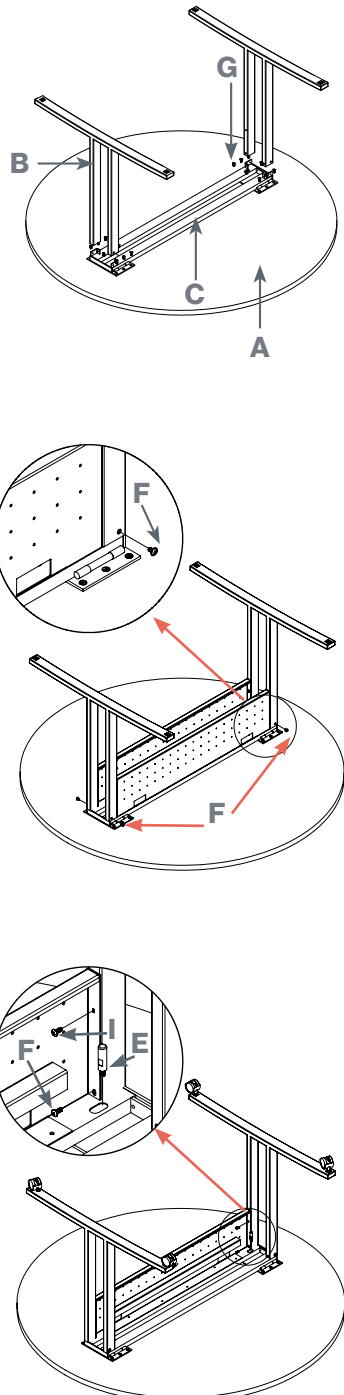
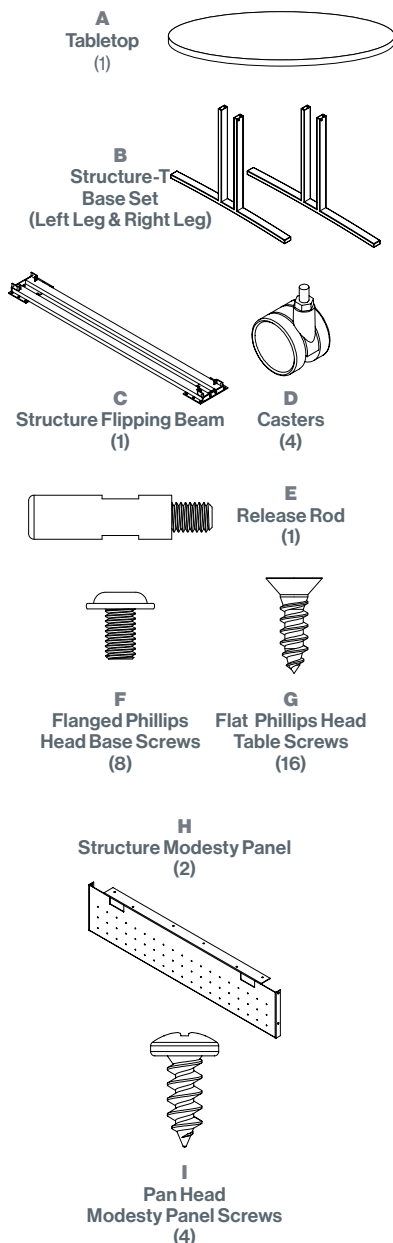
STRUCTURE FLIP TOP ROUND TABLE WITH GUSSETS

FOR MISSING PARTS OR QUESTIONS, PLEASE CALL CUSTOMER SERVICE AT 888-705-0777.

TOOLS



PARTS & HARDWARE LIST



ASSEMBLY STEPS

1. Position the Structure Flipping Beam **(C)** on the bottom of the tabletop **(A)**, aligning pre-drilled holes if applicable.

CRITICAL NOTE:
Ensure beam is oriented correctly.

2. Mount Structure Flipping Beam **(C)** to the table using (16) Flat Head Table Screws **(G)**.

3. Position the Left & Right Structure Bases **(B)** onto vertical tabs on the Flipping Beam **(C)** (Ensure that holes in the Structure Bases are facing inward).

4. Install (4) Flanged Phillips Head Base Screws **(F)** through Left & Right base outer holes into Flipping Beam **(C)**.

5. Position Modesty Panel **(H)** inside Left and Right base **(B)**.

6. Install (2) Flanged Phillips Head Base Screws **(F)** through the Modesty Panel **(H)** into Left & Right Base **(B)** inner holes.

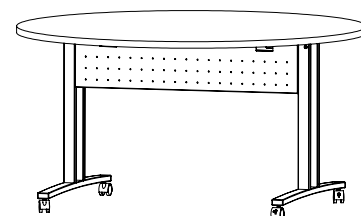
7. Install (2) Pan Head Modesty Panel Screws **(I)** through the Modesty Panel **(H)** into Left & Right Base **(B)** pilot holes.

8. Repeat steps 5, 6, and 7 for Modesty panel #2.

9. Remove the Release Rod **(E)** from the hardware pack and install it on the Flipping Beam **(C)**.

10. Install (4) Casters **(D)** onto the Base **(B)** using a 13mm wrench.

11. Have two people hold onto the edges of the top and carefully turn the table over into the upright position.



STRUCTURE FLIP TOP ROUND TABLE WITH MODESTY PANEL

FOR MISSING PARTS OR QUESTIONS, PLEASE CALL CUSTOMER SERVICE AT 888-705-0777.