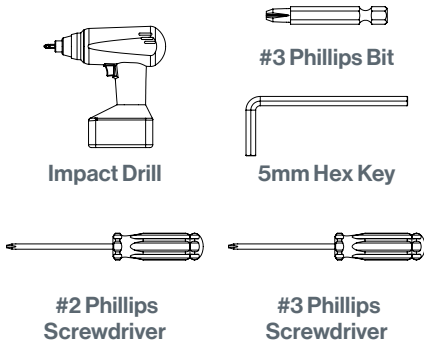
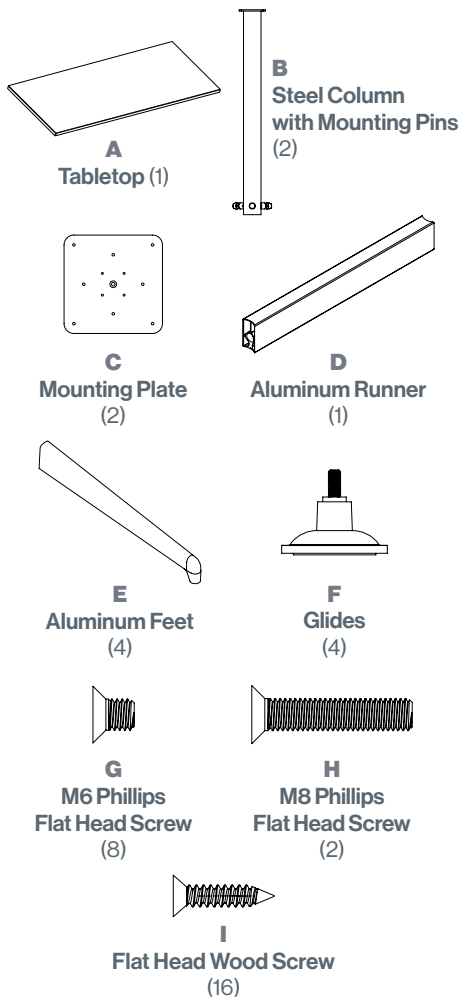


TOOLS

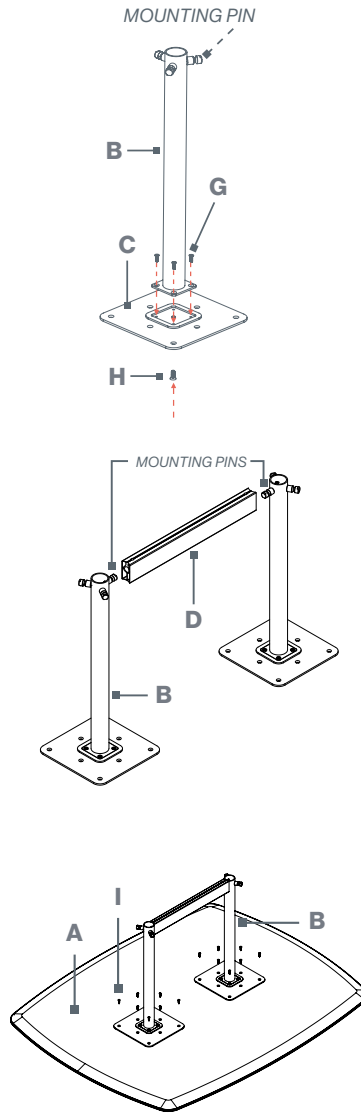


PARTS & HARDWARE LIST

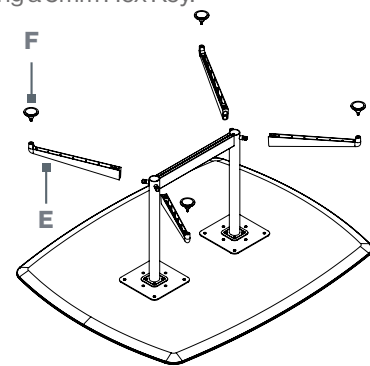


FOR MISSING PARTS OR QUESTIONS, PLEASE CALL CUSTOMER SERVICE AT 888-705-0777.

ASSEMBLY STEPS

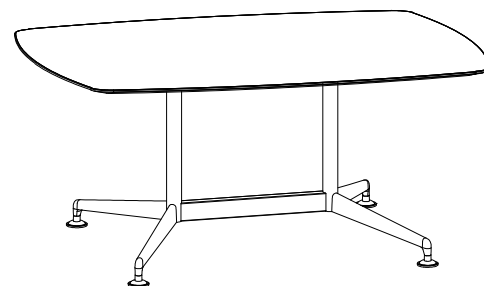


1. Lay the tabletop (**A**) upside down on a cardboard or carpeted surface.
2. Install (4) M6 Flat Head Bolts (**G**) through the steel columns (**B**) onto the Mounting Plates (**C**).
3. Install (1) M8 Flat Head Bolt (**H**) through the Mounting Plates (**C**) and into the Steel Column (**B**).
4. Ensure that all Mounting Pins are secure on the Steel Columns. If necessary, use a 14 mm wrench to tighten them.
5. Place the Aluminum Runner (**D**) onto the Mounting Pin on each Steel Column (**B**). (Use the Mounting Pin perpendicular to the Mounting Plate; see image for reference).
6. Tighten the Aluminum Runner (**D**) onto Mounting Pins using a 5mm Hex Key.



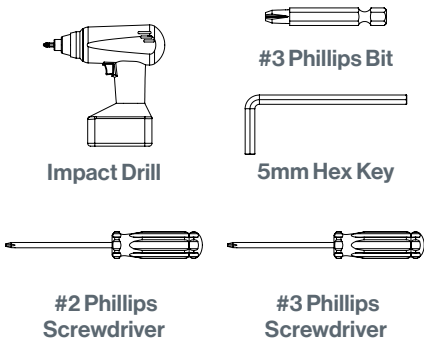
7. Attach the Mounting Plates to the bottom of the tabletop using (16) Flat Head Wood Screws (**I**).

8. Place (4) Aluminum Feet (**E**) onto Pins.
9. Tighten (4) Aluminum Feet (**E**) onto Pins using a 5mm Hex Key.
10. Attach (4) Glides (**F**) to (4) Aluminum Feet (**E**).

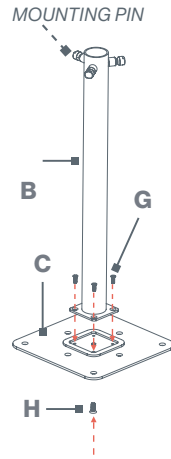
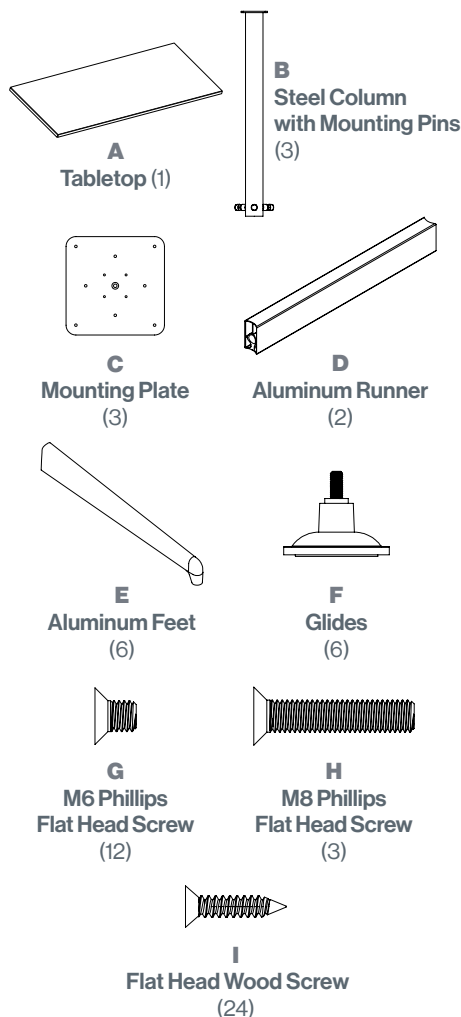


ASSEMBLY STEPS

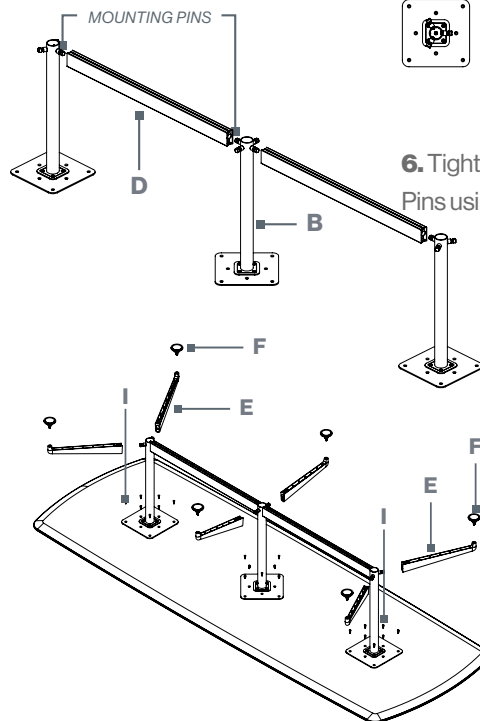
TOOLS



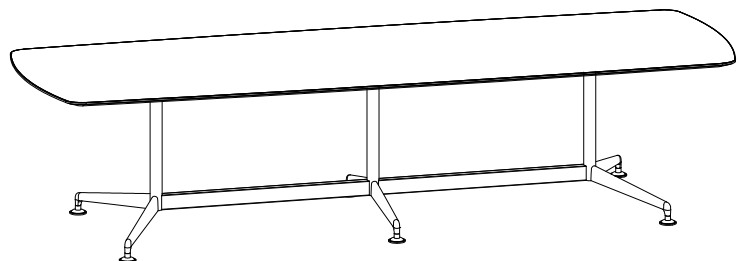
PARTS & HARDWARE LIST



1. Lay the tabletop (**A**) upside down on a cardboard or carpeted surface.
2. Install (4) M6 Flat Head Bolts (**G**) through the steel columns (**B**) onto the Mounting Plates (**C**).
3. Install (1) M8 Flat Head Bolt (**H**) through the Mounting Plates (**C**) and into the Steel Column (**B**).
4. Ensure that all Mounting Pins are secure on the Steel Columns. If necessary, use a 14 mm wrench to tighten them.
5. Place the Aluminum Runners (**D**) onto the Mounting Pin on each Steel Column (**B**). (Columns must be oriented correctly; see image for reference).



6. Tighten the Aluminum Runner (**D**) onto Mounting Pins using a 5mm Hex Key.
7. Attach the Mounting Plates to the bottom of the tabletop using (24) Flat Head Wood Screws (**I**).
8. Place (6) Aluminum Feet (**E**) onto Pins.
9. Tighten (6) Aluminum Feet (**E**) onto Pins using a 5mm Hex Key.
10. Attach (4) Glides (**F**) to (4) Aluminum Feet (**E**).



ZIA CONFERENCE SINGLE COLUMN | DUAL RUNNER