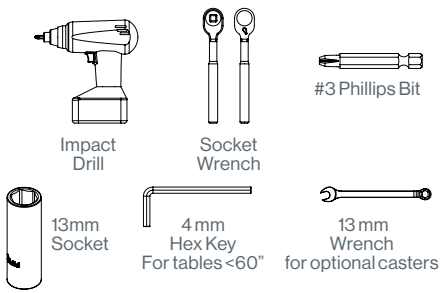
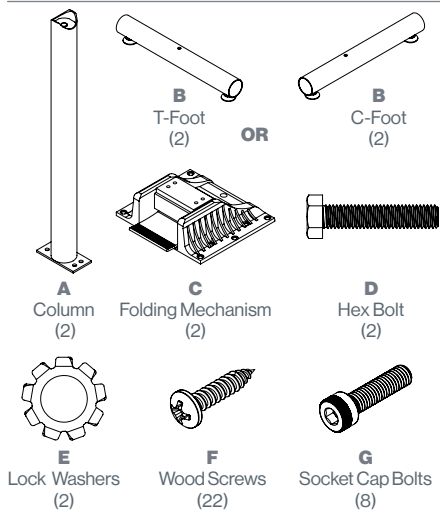


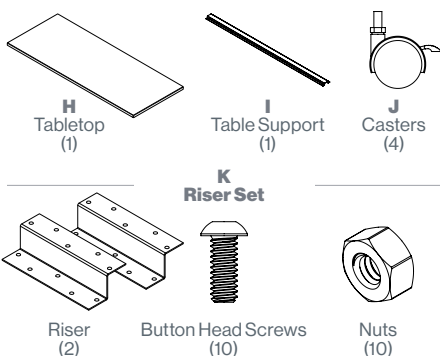
TOOLS



PARTS & HARDWARE LIST



OPTIONAL PARTS



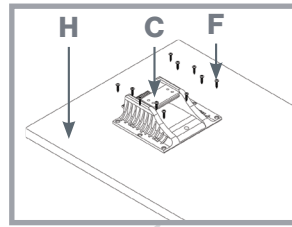
OPTIONAL TABLE SUPPORT

Align support with the pre-drilled groove on the underside of the table. Fasten using included wood screws.

OPTIONAL CASTERS

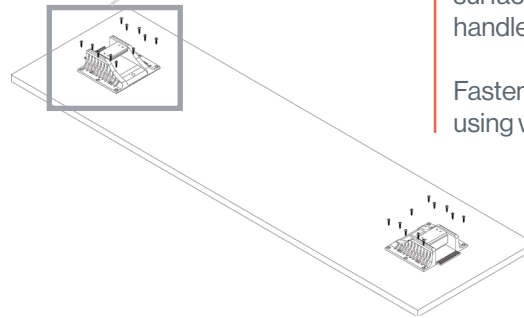
Remove the adjustable leveling glides in each foot and install (4) casters using a 13mm wrench.

ASSEMBLY STEPS



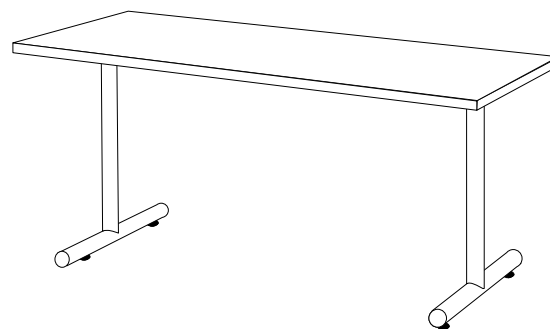
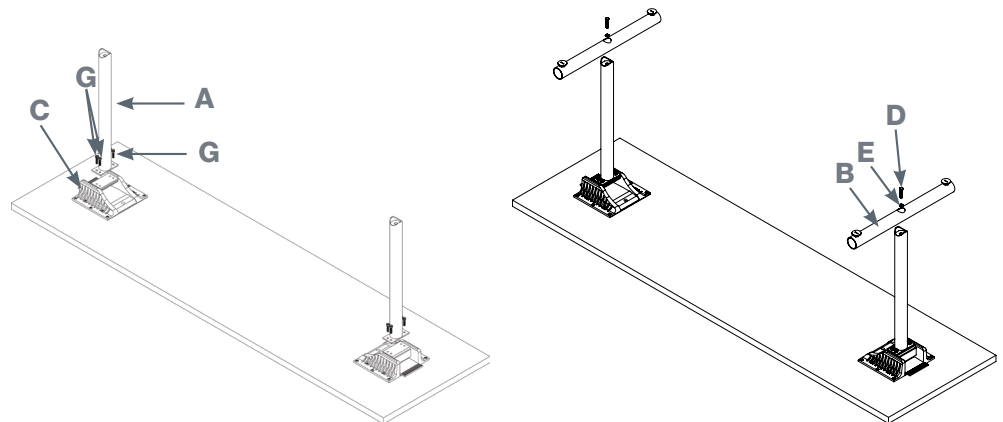
1 Align the folding mechanisms with the pre-drilled holes on the underside of the table surface. Ensure the folding mechanism release handles are facing outward.

Fasten folding mechanisms to the tabletop using wood screws.



2 Fasten columns to folding mechanisms using socket bolts.

3 Fasten feet to columns by installing a hex bolt & lock washer through the foot into the column.

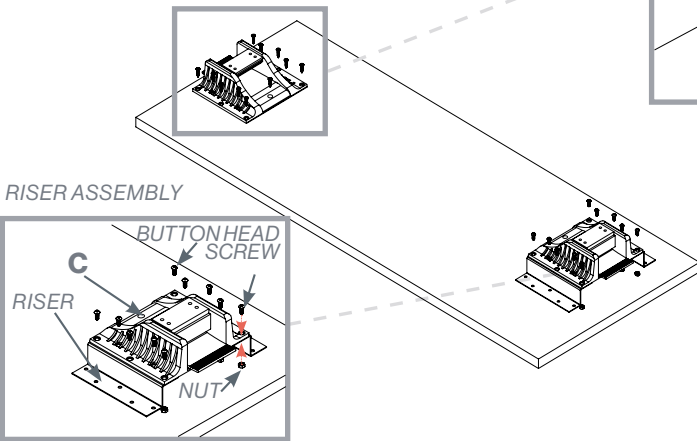


ASSEMBLED KINGSTON FOLDING TABLE

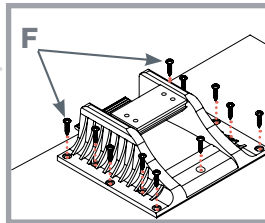
FOR MISSING PARTS OR QUESTIONS, PLEASE CALL CUSTOMER SERVICE AT 888-705-0777.

ASSEMBLY STEPS

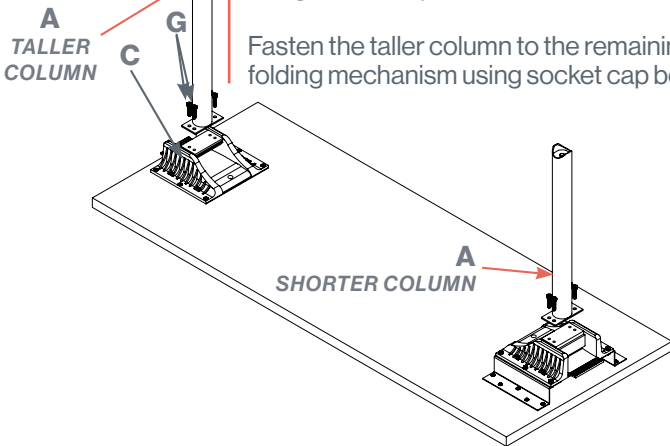
1 Position riser assembly on (1) folding mechanism as illustrated. Fasten the riser to the folding mechanism using button head screws & nuts.



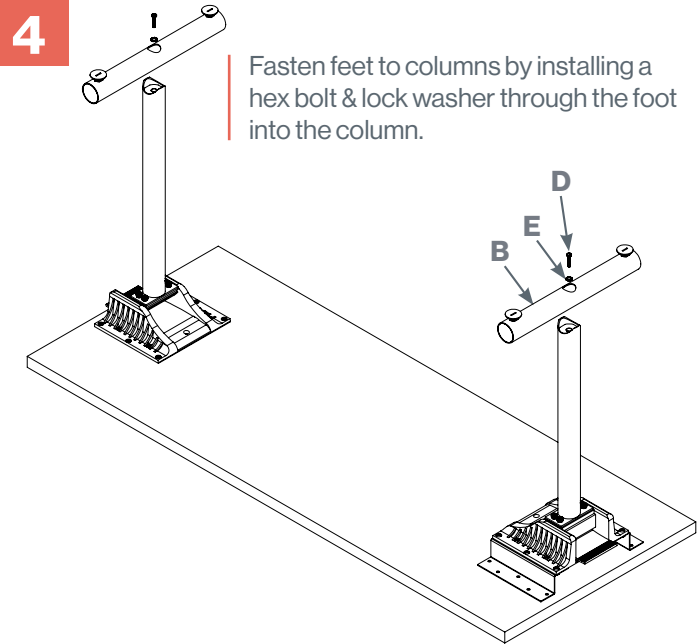
2 Align folding mechanisms with pre-drilled holes on the underside of the table surface. Ensure the folding mechanism release handles are facing outward. Fasten folding mechanisms to the tabletop using wood screws.



3 Fasten the shorter column to the folding mechanism featuring the riser assembly using socket cap bolts. Fasten the taller column to the remaining folding mechanism using socket cap bolts.



4 Fasten feet to columns by installing a hex bolt & lock washer through the foot into the column.



OPTIONAL CASTERS
 Remove the adjustable leveling glides in each foot and install (4) casters using a 13mm wrench.



ASSEMBLED KINGSTON FOLDING TABLE