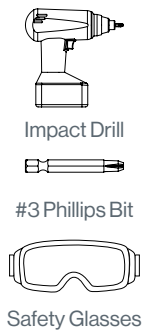
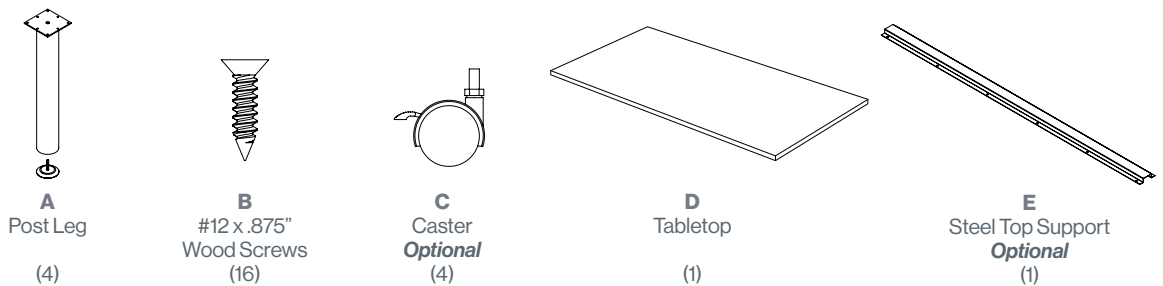


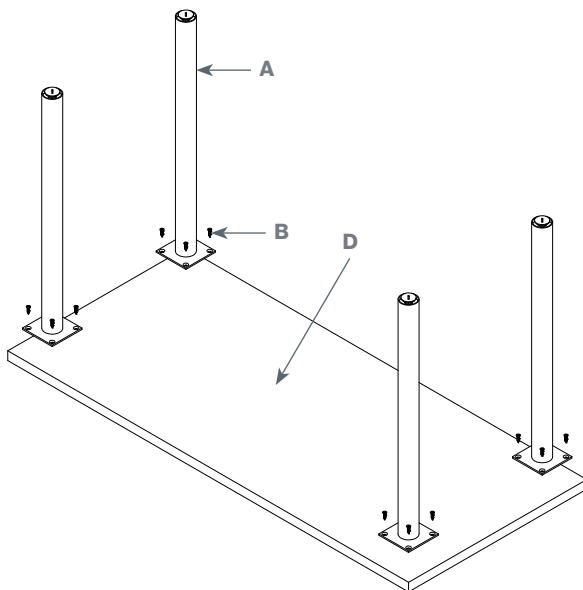
TOOLS



PARTS & HARDWARE LIST



SINGLE TABLE ASSEMBLY



1. Lay the tabletop (**D**) upside down on a piece of cardboard or carpeted surface.

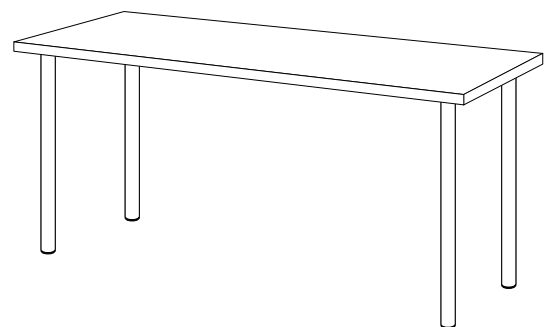
2. Position the columns (**A**) on the top (**D**) and align the holes in the mounting plate with the pre-drilled holes in the tabletop. Use the provided wood screws (**B**) to attach the top. Use every hole in the mounting plate.

3. For Optional Casters (**C**), attach to each post leg using a 14mm wrench.

4. For Optional Steel Support (**E**), align with pre-drilled holes in the tabletop (**D**) and fasten using the provided wood screws.

5. Holding onto the edges of the top, carefully turn the table over to the upright position.

6. Level the table by rotating the leveling glides.



ASSEMBLED ELLA TABLE

FOR MISSING PARTS OR QUESTIONS,
 PLEASE CALL CUSTOMER SERVICE AT 888-705-0777.

